



Quick Start Guide

MultiFlow8™ Washout

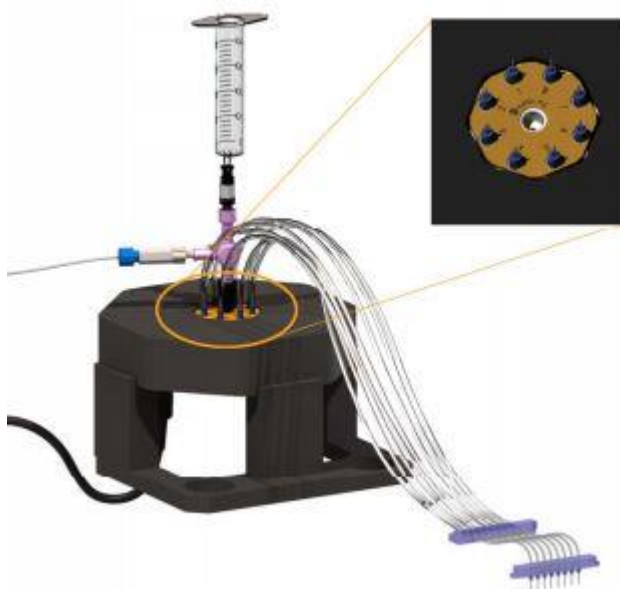
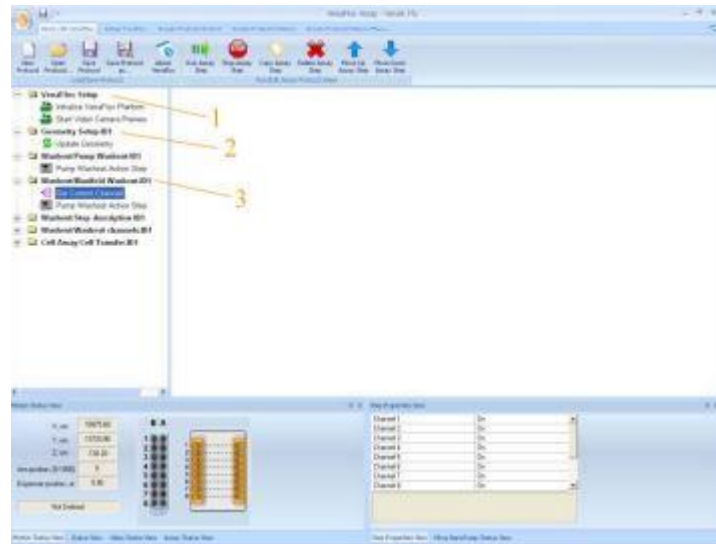
MultiFlow8 Washout

Execute the following folders and steps in VenaFlux software.

- VenaFlux setup folder **(1)** including 'initialise VenaFlux platform' & 'start video camera preview' steps.
- Geometry setup folder **(2)** consisting of 'update geometry' step.

Note: ensure geometry details match syringe and channels to be used, as well as viscosity of sample, i.e. cell suspension or blood.

Proceeding to the washout/cable & MultiFlow8 folder, run 'set current channel' step **(3)** to open all valves of the MultiFlow8.



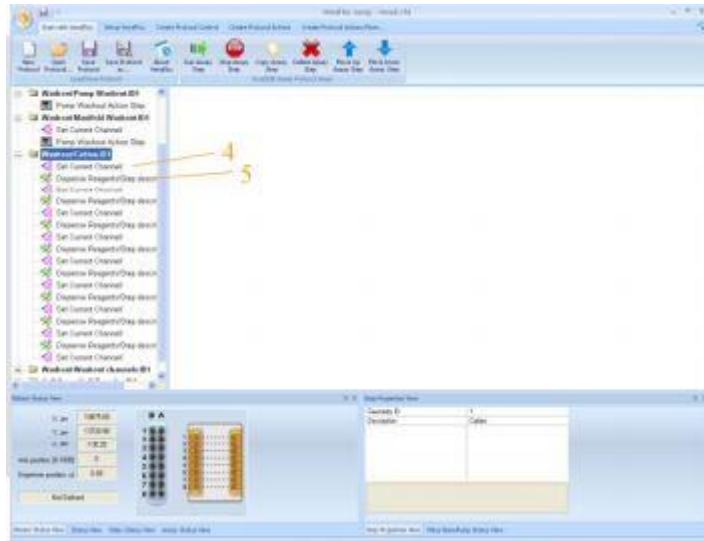
Connect the pump, from its output port to either the centre of the MultiFlow8 or to the 3-way adapter, depending on the Multiflow8 setup. With all valves open, run the 'dispense reagents' step several times to wash through all ports of the MultiFlow8.

It is also possible to connect a syringe to the MultiFlow8 as shown on the left. This method can be used for washing the MultiFlow8 and also for priming the system before connecting to the pump.

Note: ensure all valves are open by running the 'set current channel' step.

Run the next folder, washout/cables to wash each port individually — this ensures all bubbles are removed from each cable. The entire folder can be run automatically, or indeed each step can be selected one at a time.

Each port of the MultiFlow8 is opened, 1 to 8, and 100 μ L of liquid is dispensed through (4)–(5). Repeat as necessary.



When priming the system before an assay, connect the 8-way cable, from the MultiFlow8 to the ports of the biochip; and repeat washout/chip washout folder to wash 40 μ L of media through each channel.

Note: never wash ethanol or detergent through MultiFlow8 when washing.